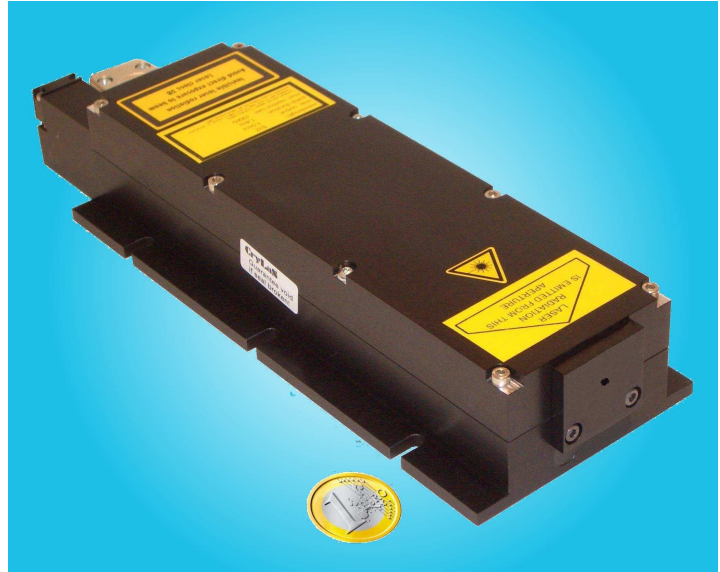


# FQSS 266-200

Diode pumped passively Q-switched solid state laser

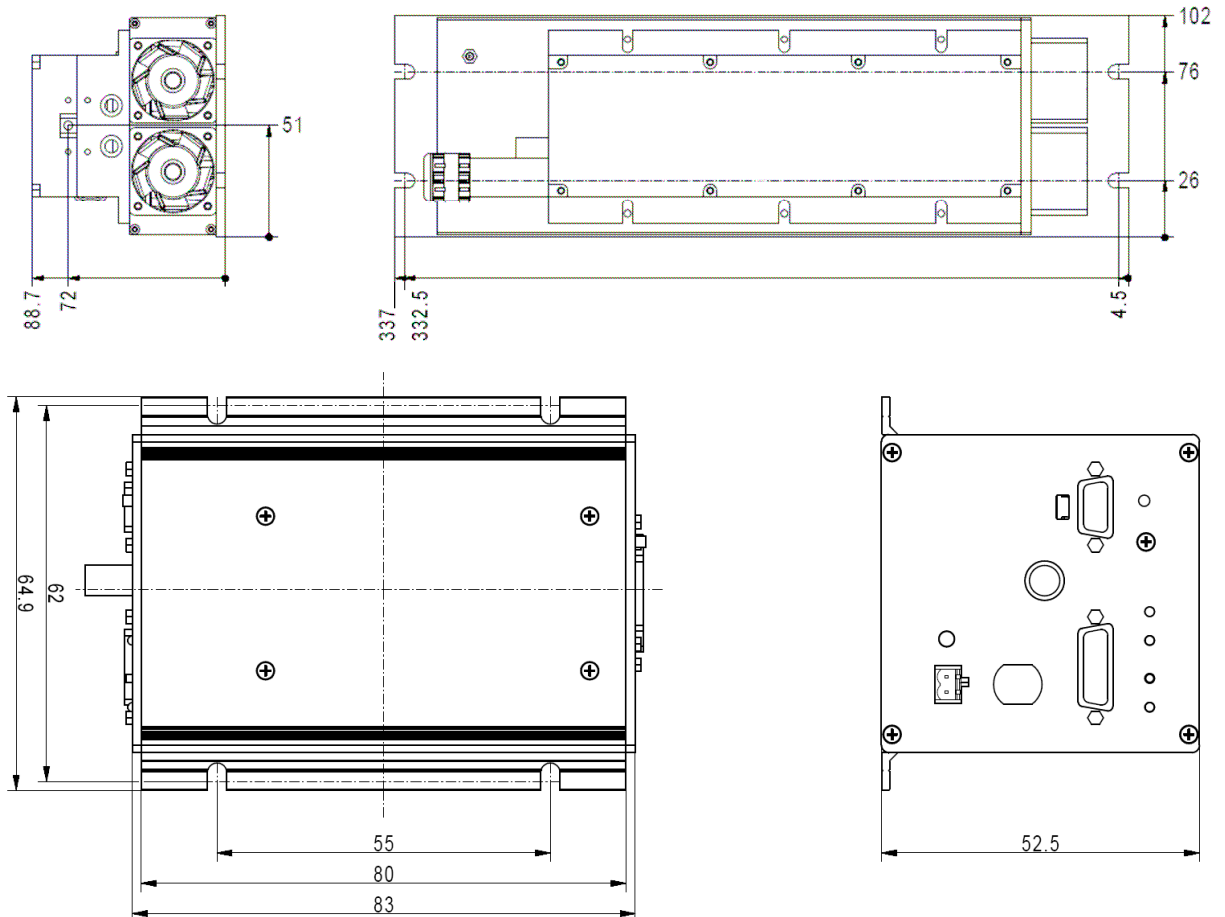
- 266 nm
- single pulse
- < 1.5 ns
- 1 – 60 Hz
- > 200 µJ



## biology · biomedicine · chemistry · analytics

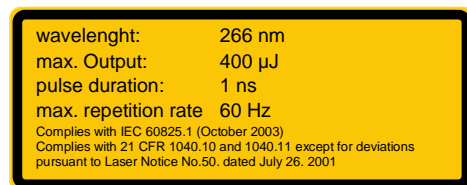
<b>Optical Data</b>	Wavelength	266 nm
	Beam Divergence (full angle)	< 3.0 mrad
	Beam Ellipticity	< 2:1
	Waist Diameter	500 ± 150 µm (located at about 110mm inside the laser head)
	Beam Diameter	0.8 ± 0.3 mm (at laser exit)
	Peak Power	> 130 kW @ 20 Hz
	Pulse Energy	> 200 µJ @ 20 Hz
	Pulse Repetition Rate (with external trigger)	1 - 60 Hz
	Pulse Width (FWHM)	< 1.5 ns
	Polarization Ratio	> 100:1, vertical
	Long term pulse energy stability (6 hrs)	< ± 5 %
	Laser Classification	4 / IV
<b>Optical Output</b>	Free Beam	
<b>Electrical Data</b>	Electrical Power Consumption	< 90 W (@230V AC)
	Line Voltage	90 - 265 V AC (50-60 Hz) or 24 V DC
<b>Interface</b>	RS 232 / USB 2.0	
<b>Miscellaneous</b>	Warm-up Time	< 10 min
	Operating Temperature	18° - 35 °C
	Laser Head Size	217 x 65 x 45 mm (core dimensions)
<b>Options</b>	Electrical driven shutter	
	Synchronization signal output (rise time < 2 ns)	

## Laser Head and Controller



## Laser Safety Labels

The FQSS266-200 lasers are class 4 according to IEC 60825-1



© June 2009, CryLaS GmbH. All rights reserved.  
 Product specifications are subject to change without notice.